



Recognized
Training Provider
2022



CONSULTANCY

CERTIFIED PROFESSIONAL IN REQUIREMENTS ENGINEERING (CPRE) – FOUNDATION

www.skillcertconsultancy.com

Course Introduction

The CPRE certification is a professional examination from International Requirements engineering board (IREB) Germany. IREB supports a single, universally accepted, international qualification scheme, aimed at Requirements Engineering for professionals, by providing the core syllabi and by setting guidelines for accreditation and examination. The program gives a comprehensive overview of the requirements process in requirements engineering /management. The CPRE curriculum provides a blend of academics, research, and industry practice.

Who should attend?

- Business Analyst from the software development industry.
- Requirements engineers from the Auto, OEM, Engineering and Manufacturing industry.
- Business managers who want to move to business analyst roles.
- Experienced business users or core team members working in IT departments as client-side business analyst in IT projects, process improvement, transformation and strategic initiatives.
- Product managers and business process owners and those interacting with IT development teams for development of IT solutions.
- Project managers
- QA/Testing professionals
- Team leads/System Analysts /Developers who have to interact with clients

Course structure

- Introduction and overview of requirements engineering.
- Fundamental principles of requirements engineering.
- Work products and documentation practices.
- Practices for requirements elaboration.
- Process for working structure
- Management practices for requirements.
- Tool support.



Training conduct

Self-paced e-learning course, Live Trainer led sessions for all time zones and corporate training programs.

DETAILED COURSE OUTLINE

INTRODUCTION AND OVERVIEW OF REQUIREMENTS ENGINEERING

Requirement's engineering -What, why, Where and How?
Role and Task of requirements Engineer.

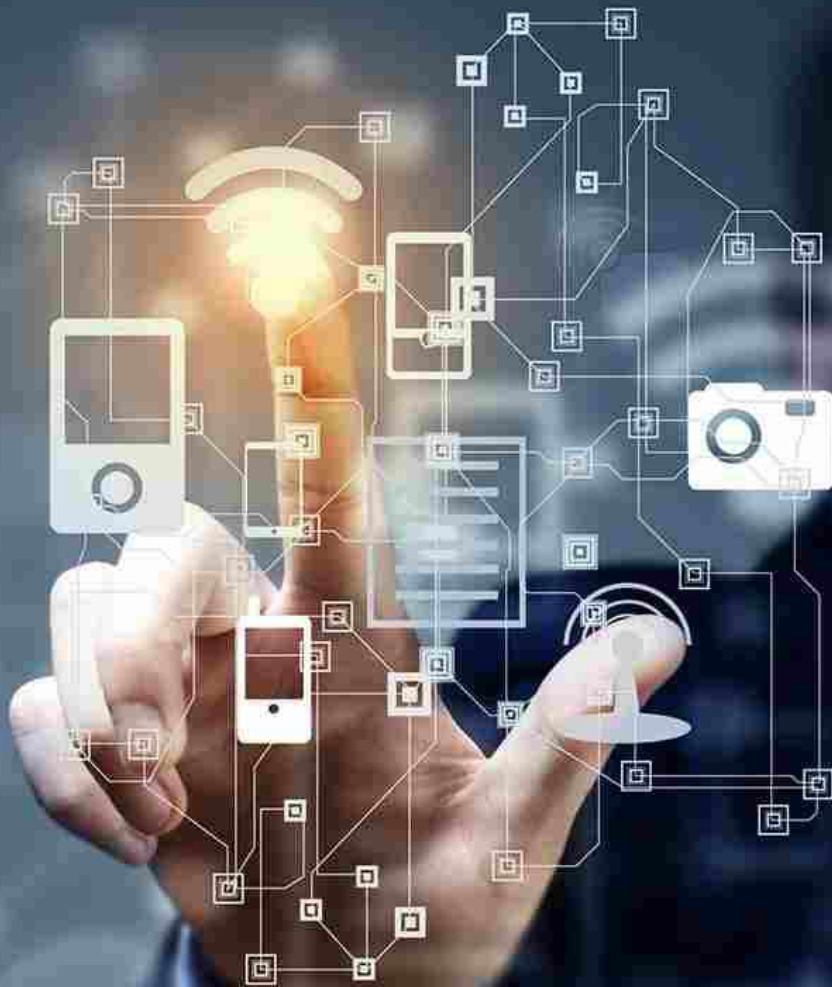
FUNDAMENTAL PRINCIPLES OF REQUIREMENTS ENGINEERING

Overview of principles and principles explained.
Principles explained.



WORK PRODUCTS AND DOCUMENTATION PRACTICES

- Work products in requirements engineering
- Characteristics of work products
- Levels of abstraction
- Documentation guidelines
- Plan the work products to be used.
- NL based work products
- Template based work products
- Model based work products
- The role of models in requirements engineering
- Modelling context – Structure and data, Function and flow, State and behaviour
- Glossaries
- Requirement's documentation structure
- Prototypes in requirements engineering
- Quality criteria for work products and requirements
- Practice : Understanding contents in work products
- Case study : Understanding industry-based templates
- Understanding industry standards.
- Components in a requirements document.
- How to write better requirements functional requirements
- How to write better requirements Non-functional requirements.

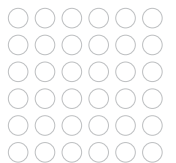


PRACTICE FOR REQUIREMENTS ELOBORATION

- Sources of requirements
- Elicitation of requirements
- Conflict resolution regarding requirements
- Validation of requirements
- Practice: Understanding requirements context using context canvas
- Case study : Overview of elicitation techniques
- What techniques to use based on context?
- Writing better requirements/Best practices
- Quality for requirements quality and verification
- Requirement's quality standards
- Verifying for requirements quality.

PROCESS AND WORKING STRUCTURE

- Influencing factors
- Requirements engineering process facets
- Configuring a requirement engineering process
- Practice: Overview of Agile requirements engineering process.
- Case study : Factors affecting RE process.



MANAGEMENT PRACTICES FOR REQUIREMENTS

- What is requirements management?
- Life cycle management
- Version control
- Configuration and baselines
- Attributes and views
- Traceability
- Handling change
- Prioritization
- Case study: Traceability, attributes, Views and priority.

TOOL SUPPORT

- Tools used in Business analysis and Requirements engineering.
- Introducing tools

Course resources

- Course completion certificate.
- More than 10 hours interactive course content hosted on advanced learner management system.
- Downloadable PDF slides.
- Comprehensive coverage of all topics.
- Course designed based on IREB CPRE FL learning outcome statements.
- 350 +Chapter end questions.
- Dynamic question bank as per CPRE FL exam weightage.
- Up to 3 hours online trainer support in case you need any assistance.



Examination pattern

The exam must be completed within 75 minutes and covers 45 multiple choice questions.

To pass the exam, you must achieve at least 70 % of the total possible score.

For examination bodies click on <https://www.ireb.org/en/exams/bodies>



SkillCert
CONSULTANCY

info@skillcert.in
phone : +91 98339 03416
www.skillcertconsultancy.com
CIN No : U74120MH2014PTC257514